

LS adapter with integrated filter | LEDUC CODE

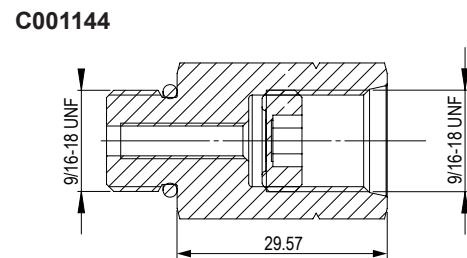
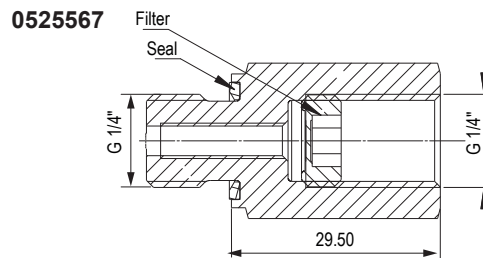
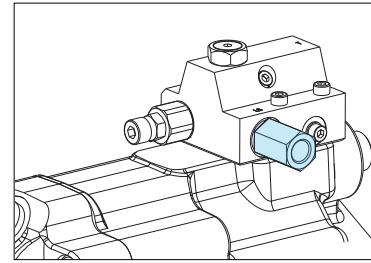
Filter fitting for LS line connection

Kit reference	LS dimension	Type of pump
0525567	G1/4"	TXV
C001144	9/16-18 UNF	TXVA (SAE)

► Technical characteristics

- It protects the LS regulator against contamination coming from the circuit.
- Filter can be removed for maintenance.
- Filtration: 150 microns.

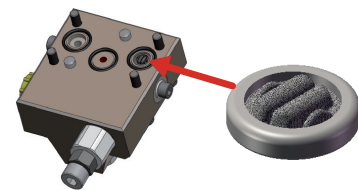
► Drawings for both versions of the kit (dimensions in mm):



SEAL + FILTER | LEDUC CODE K00028

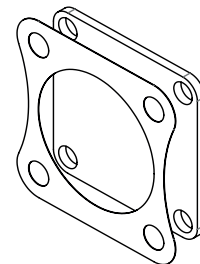
The LS filter protects the TXV's Load Sensing valve against contaminations coming from the hydraulic circuit.

Mounted as standard on all TXV pumps (except for Constant Torque).



KIT CLOSING PLATE + SEAL | LEDUC CODE P001512

FOR TXV 130 THROUGH SHAFT



CARDAN PLATE - DIN 90 and DIN 100

The cardan plate enables the pump shaft to be connected to a cardan shaft with interface as on drawing on the right.

Note: the maximum admissible torque is limited by the drive shaft.
The deflector is supplied with the cardan plate.

Type	LEDUC code	ØA	ØB	C	D	E	F	ØG	H
DIN 90	056315	90	47	43	2	10	62	55	15
DIN 100	0519040	100	57	43	2	10	64	55	15

